

Honeywell

ADEMCO VISTA-10P
ADEMCO VISTA-10PSIA
Security Systems

User Guide

K0736V3 10/04 Rev. B

National Security Systems Inc (800) 457-1999

IMPORTANT!

PROPER INTRUSION PROTECTION

For proper intrusion coverage, sensors should be located at *every possible point of entry* to a home or commercial premises. This would include any skylights that may be present, and the upper windows in a multi-level building.

In addition, we recommend that radio backup be used in a security system so that alarm signals can still be sent to the Central Monitoring Station in the event that the telephone lines are out of order (alarm signals are normally sent over the phone lines).

EARLY WARNING FIRE DETECTION

Early warning fire detection is important in a home. Smoke and heat detectors have played a key role in reducing fire deaths in the United States. With regard to the number and placement of smoke/heat detectors, we subscribe to the recommendations contained in the National Fire Protection Association's National Fire Alarm Code (NFPA 72). These recommendations can be found on page 43 of this manual.

SYSTEM COMPATIBILITY NOTICE

Your Honeywell security system is designed for use with devices manufactured or approved by Honeywell for use with your security system. Your Honeywell security system is not designed for use with any device that may be attached to your security system's keypad or other communicating bus if Honeywell has not approved such device for use with your security system. Use of any such unauthorized device may cause damage or compromise the performance of your security system and affect the validity of your Honeywell limited warranty. When you purchase devices that have been manufactured or approved by Honeywell, you acquire the assurance that these devices have been thoroughly tested to ensure optimum performance when used with your Honeywell security system.

About This Manual

This manual is a step-by-step guide that will acquaint you with the system's features and benefits. It defines the components and their functions, describes their operation, and provides clear step-by-step instructions for normal and emergency procedures. Keep this manual in a convenient place so that you can refer to it as necessary.

System Overview	5
Introduction	5
System Basics	5
Using the Voice Message Center	7
About The Keypads	8
General Information	8
Functions of the Keypads.....	10
Entry/Exit Delays	12
Exit Delay.....	12
Entry Delay.....	12
Exit Alarms	13

Panic Keys.....	24
Using Panic Keys.....	24
Macro Key Programming & Usage.....	25
About Macro Keys.....	25
Example of Macro Programming.....	26
Using a Programmed Macro Key.....	26

Congratulations on your ownership of a Honeywell Security System. You've made a wise

Zones

- The system sensing devices have been assigned to various “zones,” which are specific areas of protection (e.g., front door, kitchen window, etc.).
- Zone numbers are displayed at the keypad when an alarm or trouble condition occurs on a sensor.

Arming, Step-Arming and Disarming Burglary Protection

- The system must be armed before the burglary protection can sense intrusions.
- To arm your system, enter your user code followed by the desired arming key.
- If programmed, the [#] key can be pressed instead of entering the security code when arming the system.
- You can also use the step-arming key, if programmed, to arm the system, which lets you use a function key to arm the system in one of three modes by simply pressing the key repeatedly.
- To disarm the system, enter your user code then press the [OFF] key.

Alarms

- When an alarm occurs, both the keypad and external sounders will sound, and the keypad will display the zone(s) causing the alarm.
- If your system is connected to a Central Monitoring Station, an alarm message will also be sent.
- To stop the alarm sounding, simply disarm the system.

Memory of Alarm

- When an alarm condition occurs, the keypad displays the number(s) of the zone(s) that caused the problem, and displays the type of alarm (e.g., “fire”).
- The message remains displayed even after disarming the system, but can be cleared with another “off” sequence.

Phone Access

- If included, a phone module permits you to access the system via a touch-tone phone, either on-premises or by calling-in when away.
- You can receive synthesized voice messages over the telephone regarding the status of the security system.
- You can arm and disarm the system and perform most function commands remotely via the telephone, with voice confirmation provided after each command entry.
- Complete information regarding the use of this feature is provided in a separate manual entitled “Phone Access User's Guide” that is supplied with the voice module.

Paging Feature

- If programmed, the system can automatically send certain system condition messages to a pager.
- The display consists of code numbers that indicate the type of condition that has occurred.

Function Keys

- The “A”, “B”, “C”, and “D” keys on the keypad can be programmed to perform various functions.
- Functions include: activate a Panic alarm; arm the system; provide step arming; switch lights on/off; send a message to a pager; display Time/Date; start a Macro

Scheduling

- Your system can be programmed to automatically perform certain functions (e.g., arm the system) at a predetermined time each day.

The Voice Keypads feature a voice message center that lets you record and playback one message.

- The message can be up to 2.5-minutes long
-

Your keypads allow you to control all system functions. The keypads feature the following:

- A telephone style (digital) keypad
- Liquid Crystal Display (LCD) which shows the nature and location of all occurrences
- Built-in sounder which will sound during alarms and troubles. The sounder also "beeps" during certain system functions and when depressing any of the keys (to acknowledge the key press).
- Backlighting of the LCD display windows. Backlighting turns on when any key is pressed, and when opening an entry/exit door while the system is armed. This feature is helpful when a keypad is located in a dimly lit area.

IMPORTANT: If the keypad beeps rapidly upon entering the premises, it indicates that an alarm has occurred during your absence and an intruder may still be on the premises. LEAVE IMMEDIATELY and CONTACT THE POLICE from a nearby safe location.

Your keypads are functionally the same, but may have different types of displays, depending on the type installed with your system. To access the keys on the keypad, simply open the swing-down door.

Alpha Display 2-line alpha display keypads feature a 2-line, 32-character alphanumeric LCD which can display system messages in friendly English. These keypads can also be programmed with custom zone descriptors.

Fixed-Word Display Fixed-Word display keypads are functionally identical to Alpha display keypads, but the LCD display uses pre-designated words to identify the nature and location of occurrences.

Voice Keypads Voice Keypads (if installed), are functionally the same as other keypads, except that these keypads can provide the following:

- Voice announcements of system status (see *Checking for Open Zones* section)
- Voice chime, which can alert you to the opening of doors and windows while the system is disarmed (see *Voice Chime in Chime mode* section)
- Message center, which lets you record and playback messages (see *Using the Voice Message Center in the System Overview* section).

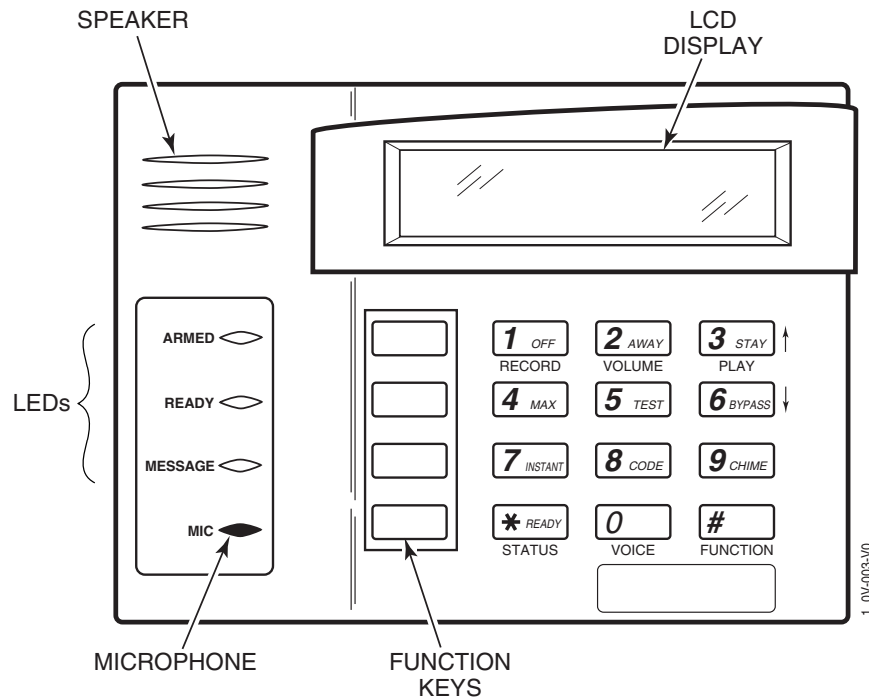
Fixed-Word Display Keypad

AWAY: All burglary zones, interior and perimeter, are armed.

STAY:

NOTE: The functions printed directly on the keys indicate their primary purpose; the functions printed under some of the keys (shown in brackets under the respective key),

indicateBT/T1_0 ()]9h6(refBe]9h6(refEi.O987o4(er 8((ke)-co-7(n)-7(d) ref6(ary7(n)rp th)-oer 8((.6(m) 6(:)]TJ/31_1 1 Tf0 Tc 0 T



Voice-capable 2-line Alpha keypad
(shown with flip-down front door removed)

IMPORTANT!

- When entering codes and commands, sequential key depressions must be made within 4-5 seconds of one another. If 4-5 seconds elapse without a key depression, the entry will be aborted and must be repeated from its beginning. Be sure to observe this precaution when performing any of the procedures in this manual.
- If you make a mistake while entering a security code, stop, press the [*] key, and then start over. If you stop in the middle while entering a code, and then immediately start the entry over, an erroneous code might be entered.

Your system has preset time delays, known as exit delay and entry delay.

Exit delay

Exit Error Conditions

Whenever you arm the system, the exit delay begins. If an entry/exit door or interior

*

Before arming your system, all protected doors, windows and other protection zones

-
-
- Used when you want to arm the system with persons staying inside (or if you have pets that are moving throughout the premises).
 - The perimeter sensors are armed, but interior sensors are left disarmed.
 - Exit delay begins (you can leave through the entry/exit door, if desired).
 - An alarm sounds if any protected window or non-entry/exit door is opened.
 - You may otherwise move freely within the premises.
 - Persons entering later can enter through an entry/exit door, but they must disarm the system within the *entry* delay period to avoid sounding an alarm.

-
- Use Night-Stay mode to provide increased security while staying inside.
 - Arms same as Stay mode, but also arms pre-selected interior sensors (programmed by your installer), while other interior sensors are left disarmed.
 - Persons entering later can enter through an entry/exit door but they must disarm the system **and** must not violate any of the programmed interior zones to avoid sounding an alarm.
 - **IMPORTANT:** When Night-Stay mode is on, the selected interior zones are armed and cause an alarm if anyone enters those areas (e.g., waking in the middle of the night). To avoid sounding an alarm, you must disarm the system before any activity takes place in those interior zones.

-
- Used when staying inside and do not expect anyone to use an entry/exit door.
 - Arms same as Stay mode.
 - An alarm sounds immediately if any protected perimeter window or any door is opened, including entry/exit doors.
 - **IMPORTANT:** Arming in this mode greatly increases the chance of false alarms. Use extreme care in selecting this mode of arming.

-
- Used when nobody will be staying inside (including pets).
 - The entire system (interior and perimeter) is armed.
 - Exit delay begins letting you leave through the entry/exit door.
 - An alarm sounds if a protected window or any door is opened, or if any movement is detected inside your premises.
 - You can reenter through an entry/exit door, but you must disarm the system within the *entry* delay period to avoid sounding an alarm.

-
- Used when leaving the premises for extended periods (e.g., vacation).
 - Arms same as Away mode, but entry delay is off.
 - An alarm sounds same as Away mode, and sounds upon opening entry/exit doors.
-

Before arming, close all perimeter doors and windows and make sure the Ready to Arm message is displayed.

Modes of Arming

Mode	Press these keys...	Keypad Confirms By...
Stay	security code + [3] (STAY)	<ul style="list-style-type: none">• three beeps[†]• armed STAY message displayed• red ARMED indicator lights
Night-Stay	security code + [3] + [3]	<ul style="list-style-type: none">• three beeps[†]• NIGHT-STAY message displayed• red ARMED indicator lights
Instant	security code + [7] (INSTANT)	<ul style="list-style-type: none">• three beeps[†]• armed STAY message displayed• red ARMED indicator lights• also note that entry delay is turned off.
Away	security code + [2] (AWAY)	<ul style="list-style-type: none">• two beeps[†], or, if programmed, beeping for duration of exit delay• armed AWAY message displayed• red ARMED indicator lights <p>Leave the premises through an entry/exit door during the exit delay period to avoid causing an alarm. The keypad beeps rapidly during the last 10 seconds of the exit delay to warn you that it is ending.</p>
Maximum	security code + [4] (MAXIMUM)	<ul style="list-style-type: none">• same as Away (described above) <p>Note that entry delay is turned off.</p>

[†] **Arming Ding:** In addition to the keypad beeps, the external sounder emits a short “ding” sound after arming, if programmed to do so. The ding confirms that the system is armed, and may occur immediately after the command or be delayed (until arm/disarm report is sent or exit delay expires). Ask your installer about how this feature is set for your system.

Quick Arming

If "Quick Arming" was programmed by the installer, the [#] key can be pressed in place of the security code when arming the system in any of its arming modes (except Night-Stay). However, **the security code must always be used to disarm the system.**

Function Key Arming

For any arming command, a function key may have also been programmed for your system. If so, you can press and hold the appropriate function key for 2 seconds to arm the system. See your installer for the designated functions (see *Single Button Arming* section).

The “A”, “B”, “C”, and/or “D” keys on your keypad may have been programmed for

Your system may be equipped with a keyswitch for use when arming and disarming. Red and green lights on the keyswitch plate indicate the status of your system as follows:

Green Light: Lights when the system is **disarmed and ready** to be armed (no open zones). If the system is disarmed and the green light is off, it indicates the system is not ready (one or more zones are open).

Red Light: Lights or flashes when system is armed in AWAY or STAY mode. See your installer for the meanings of the lit red light:

Lit Steady = system armed AWAY or

system armed STAY and exit delay has expired

Flashing = system armed STAY and exit delay timer active

Rapid flashing = an alarm has occurred (memory of alarm).

Before arming, close all perimeter doors and windows.

To arm in the AWAY mode:

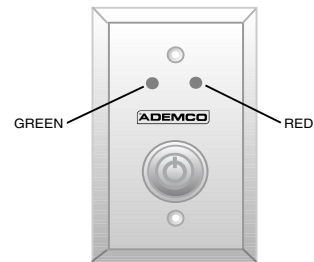
Turn the key to the right for 1/2 second and release. Keypads beep twice and the red indicator lights or flashes.

To arm in the STAY mode:

Turn the key to the right and hold for longer than 1 second, then release. Keypads beep three times and the red indicator lights or flashes.

To disarm the system:

Turn the key to the right and release. The red light turns off



The **OFF** key is used to disarm the system, silence alarm and trouble sounds, and clear alarm memories.

IMPORTANT: If you return and the main burglary sounder is on, DO NOT ENTER, but CONTACT THE POLICE from a nearby safe location.
If you return after an alarm has occurred and the main sounder has shut itself off, **the keypad will beep rapidly upon your entering, indicating that an alarm has occurred during your absence.**
LEAVE AT ONCE, and CONTACT THE POLICE from a nearby safe location.

1. + 1

(Security Code) **OFF**

The "READY" indicator light will be lit if all zones

Use this key when you want to arm your system with one or more zones intentionally unprotected.

Vent Zones: Your system may have certain windows set as “vent” zones, which are automatically bypassed if left open when arming the system (you do not need to manually bypass them). However, if a vent zone window is closed **after** arming, it becomes protected and will cause an alarm if opened again while the system is armed.

When bypassing zones:

- The system must be disarmed before you can bypass zones.
- Bypassed zones are unprotected and will not cause an alarm if violated.
- The system will not allow fire zones to be bypassed.
- Zones are automatically unbypassed when the system is disarmed.

1. + 6 + zone numbers (see below)

(Security Code) **BYPASS**

Enter the 2-digit zone number(s) for the zone(s) to be bypassed (e.g., 06, 10, 13, etc.). Single digit zone numbers must be preceded by a zero (e.g. 05, 06).

2. When finished, the keypad will momentarily display a "Bypass" message for each bypassed zone number. Wait for all bypassed zones to be displayed. Arm the system as usual. When armed, the arming message is displayed with “ZONE BYPASSED.” To display bypassed zones prior to arming, enter your security code and press the [6] BYPASS key.

Alpha Display:

DISARMED - PRESS
* TO SHOW FAULTS

Fixed-Word Display: NOT READY

Alpha Display:

DISARMED BYPASS
READY TO ARM

Fixed-Word Display: BYPASS

ARMED: STAY
ZONE BYPASSED

Typical armed alpha display after bypassing zones.

If programmed, "Quick Bypass" allows you to easily bypass all open (faulted) zones

CHIME mode alerts you to the opening of a perimeter door or window while the system is disarmed. When Chime mode is activated:

- Three tones sound at the keypad whenever a perimeter door or window is opened.
- Interior zones do not produce a tone when they are faulted.
- Pressing the **READY** key will display the open protection points.
- Chime mode can be used only while the system is disarmed.

To turn Chime Mode on/off (system must be disarmed):

+ 9

(Security Code) **CHIME**

DISARMED CHIME READY TO ARM

Fixed-Word Display: CHIME

The CHIME message appears when on. Perimeter zones will cause a tone when faulted.

The CHIME message disappears when Chime mode is off.

Voice Chime: You can set the Voice Keypads (if installed) to announce faulted (opened) entry/exit or perimeter zones whenever normal Chime mode is on.

To turn Voice Chime Mode on or off: # + 0 + 2 + 4

(normal Chime mode must be on first)

When Voice Chime is on, faulted zones cause a voice status announcement, chime and display. When off, the sounder still provides chime if normal Chime mode is on.

The system lets you view its time and date setting on alpha keypad.

+[#] + [6] [3]

(Security Code)

OR, press the function key (A, B, C, or D) for viewing current date and time, if programmed.

A typical time/date display is shown.

The display will remain on for about 30 seconds.

Alpha Display:

DISARMED
READY TO ARM

TIME/DATE	SAT
12:05AM_05/09/00	

“A” “B” “C” “D”

If one of the above keys has been programmed for the date/time display feature, place a check mark in the box beneath that key.

You can set the time and date by doing the following:

1. +[#] + [6] [3]

(Security Code)

Alpha Display:

DISARMED
READY TO ARM

2. Press [*] when the time/date is displayed.

A cursor appears under the first digit of the hour.

To move cursor ahead, press []. To go back, press [#].*

- Enter the 2-digit hour setting.
- Enter the 2-digit minute setting.
- Press [1] for PM or [0] for AM.
- Enter the last two digits of the current year.
- Enter the 2-digit month setting.
- Enter the 2-digit day setting.

TIME/DATE	SAT
04:04PM 10/17/00	

Current time display

TIME/DATE	SAT
04:04P2000/10/17	

Time/date editing display

3. To exit, press [*] when cursor is at the last digit, or wait 10 seconds.

Your system may have been programmed to use special keys to manually activate emergency (panic) functions as follows:

This Function	Sends this signal*	With This Sounding...
Silent Alarm	silent alarm	no audible alarm and no change in normal display to indicate that a silent alarm has been initiated.
Audible Alarm	audible alarm	a loud, steady alarm at keypad(s) and at any external sounders that may be connected.
Personal Emergency	auxiliary alarm	steady alarm sound at keypad(s), but not at external bells or sirens.
Fire Alarm	fire alarm	temporal (pulsing) sound at external bells and sirens.

*All panic functions send signals to the Central Monitoring Station, if connected.

To activate a Panic Function:

Press and hold down for at least 2 seconds whichever lettered key on the keypad has been programmed for the desired emergency function.

OR

Press both keys of the assigned key pair at the same time.

Alpha Display:

DISARMED

The “A”, “B”, “C” or “D” keys can be used to automatically activate a series of commands of up to 16 keystrokes, if programmed for this function “.”-11(Tm223k)-14(ee-12(16)-12(key)

The keypad beeps to acknowledge your input and displays the command you entered (followed by “F”).

Your system may be set up so that it can control certain lights or other devices.

- Some devices may be automatically turned on or off by the system.
- You may be able to override automatically controlled devices using the commands described below.
- Some devices can be manually turned on or off using the commands described below.
- See your installer for a list of devices that may be set up for your system. A list of these devices is provided at the back of this manual for you to fill out.

To Activate Devices:

+ [#] + [7] + 2-digit device number

(Security Code)

Devices associated with that device number activate.

To Deactivate Devices:

+ [#] + [8] + 2-digit device number

(Security Code)

Devices associated with that device number deactivate.

Alpha Display:

DISARMED READY TO ARM

Fixed-Word Display: READY

Your system may be set up to automatically send alert messages to a pager as certain conditions occur in your system.

- The following events can be programmed by your installer to be sent to the pagers: arming and disarming†, alarms, and trouble conditions. († reports when arming/disarming from a keypad using a security code; auto-arming/disarming, arming with assigned button, and keyswitch arming do not send pager messages.)
- You can also program the system to send an automatic pager message to alert you in the event that someone has not arrived home (disarmed the system) within a defined period of time (see the **Scheduling** section for details on “latch key report”).
- Your installer programs the pager phone numbers and reporting events.
- The pager message consists of a 7-digit system status code that indicates the type of condition that has occurred.
- An optional, predefined 16-digit character string can precede the 7-digit system status code; these characters can consist of a PIN no., subscriber account no., or any additional data that you may wish to have sent to the pager.
- The pager display format is as follows: *3-digit Event Code*

Optional 16 digits **AAAAAAAAAAAAAAAA** – **BBB** – **CCCC** *1-digit partition + 3-digit User or Zone No.*

A =	B =	C =
Optional 16-digits for Account numbers, PIN numbers, or any other data; programmed by the installer, if required.	A 3-digit code that describes the event that has occurred in your system (see for event codes table below)	A 1-digit partition number plus a 3-digit User or Zone number, depending on the type of event that has occurred, where: <ul style="list-style-type: none"> • alarms and troubles display zone number • arming/disarming (opens/closes) display user number • single-digit user or zone numbers are preceded by a zero.

The 3-digit Event Codes (BBB) that can be displayed are:

911 =	811 =	101 =	102 =
Alarms. The 4-digit number (CCCC) represents the <i>zone number</i> that has caused the alarm.	Troubles. The 4-digit number (CCCC) represents the <i>zone number</i> that has caused the trouble.	Open (system disarmed). The 4-digit number (CCCC) represents the <i>user number</i> that has disarmed the system.	Close (system armed). The 4-digit number (CCCC) represents the <i>user number</i> that has armed the system.

Examples of typical 7-digit pager displays follow.

Ex. 1. 911-1004 = Alarm (911) on zone 4 (**1004**);

Ex. 2. 102-1005 = Closing–system arming (102)– by user 5 (**1005**)

Your system may be set up so you can manually send a message to a pager.

-

Your installer assigned a master code that is used to perform all system functions. In addition, you can assign up to 15 different security codes for use by other users.

- Only the System Master can assign user codes to users.
- Users are identified by 2-digit user numbers (03-17 [users 01 and 02 are reserved]).
- In addition to a security code, each user is assigned various system attributes.
- User codes can be used interchangeably when performing system functions (a system armed with one user's code can be disarmed by another user's code), with the exception of the Guest code and Arm Only code described below.
- User code programming involves these steps:
 1. Choose a user number and assign a 4-digit security code.
 2. Assign an authority level to that user.
 3. Assign other attributes as necessary (see attributes on the next page).

NOTE: The factory settings are designed to meet most normal user situations. Therefore, the only step you usually need to do when adding users is assign a user number and a security code.

Authority levels define the system functions a particular user can/cannot perform.

Level	Title	Explanation
N/A	System Master	Reserved for user 02; Can perform all system functions and assign codes; can change its own code as described on the following page. The default System Master code is 1234.
0	Standard User	Can only perform security functions. Cannot perform other system functions.
1	Arm Only	Can only arm the system. Cannot disarm or do other functions.
2	Guest	Can arm the system, but cannot disarm the system unless the system was armed with this code. This code is typically assigned to someone (e.g., babysitter or cleaner) who has a need to arm/disarm the system only at certain times. The user of this code should not use the "Quick Arming" feature.
3	Duress Code	Intended for use when you are forced to disarm or arm the system under threat. When used, the system will act normally, but can silently notify the Central Monitoring Station of your situation, if that service has been provided.

The following lists the various command strings for adding user codes and attributes.

Refer to the User Setup chart at the back of this manual for factory assignments of user attributes and to keep a record of user programming.

Change System Master Code System Master code + [8] + 02 + new Master code + new code again

The System Master code can be changed only by using the current System Master code or by the Installer using the Installer code (Installer code + [8] + 02 + new System Master code)

Add User Code: System Master code + [8] + user no. + new user's code

User 01 = installer User 03-16 = standard users
User 02 = master (factory set master code is 1234)
The Keypad beeps once to confirm that new user was added.

Delete User Code: System Master code + [8] + [user no.] + [#] [0]

The user code and all attributes programmed for this user number, including any associated RF keys, are erased from the system.

Authority Level: System Master code + [8] + [user no.] + [#] [1] + auth. level

Factory Assignments:
users 03-16 = 0
Authority Levels (see definitions on previous page):
0 = standard user 2 = guest
1 = arm only 3 = duress

Access Group: System Master Code + [8] + [user no.] + [#] [2] + group (1-8)

Factory Assignments: none
You can assign users to a group, then set an access schedule that defines the times this group of users can operate the system. The system ignores these users outside the scheduled times.

RF User Number: System Master Code + [8] + [user no.] + [#] [4] + zone no.

Factory Assignments: none
Use this command to assign a wireless button device (keyfob) to this user (keyfob must be enrolled in system first; see installer).
Zone number: enter the zone number assigned to a button on the keyfob that will be used for arming/disarming by this user.

Pager On/Off: System Master Code + [8] + [user no.] + [#] [5] + 0 or 1

Factory Assignments:
users 01-16 = 1 (on)
You can program a user so that a message is sent to a pager whenever this code is used to arm or disarm the system.
Paging On/Off: 1 = allow paging; 0 = no paging for this user

The system provides one end-user schedule (programmable by master/installer only), which can control various types of events.

- The schedule causes a defined event to start and stop (when appropriate) at a specified time.
- The schedule can be set to automatically repeat at various intervals.
- The schedule can be set for random starting, if desired.

-
1. + [#] + [6] [4]
(Master Code)

Alpha Displays:

1 DISARMED READY TO ARM

2. Enter "01" as the 2-digit schedule number.
Press [*] to continue.

ENTER SCHED NO. OO=QUIT OO
--

3. Enter the desired 2-digit event number from the following list.

ENTER EVENT

00 = clear the scheduled event

01 = turn a programmed output on or off

(see *Using the Ice Commands* section for a list of output device numbers used in your system)

02 = set a user access schedule for one or more users

(see *Security Codes* section for an explanation of access groups)

03 = send a "latch-key" report to a pager if the system is not disarmed by a specified time; message sent is "777-7777."

04 = automatically arm the system in STAY mode at a specified time

05 = automatically arm the system in AWAY mode at a specified time

06 = automatically disarm the system at a specified time

07 = Display the word "REMINDER" at a specified time

(if selected, the keypad will beep every 30 seconds beginning when the word "REMINDER" is scheduled to display. To stop the beeps and cancel the display once it starts, simply press any key.

Press [*] to continue.

4. For event number "01," enter the output number associated with this schedule.
Otherwise, this prompt is skipped.
Press [*] to continue to the "Start" prompt below.

DEVICE NUMBER XX

-
5. For event number "02," enter the access group number. Otherwise, this prompt is skipped.
Press [*

The system records various events in a history log, which can be viewed by the master user using an Alpha Display keypad.

- The Event Log holds up to 32 events.
- Events are displayed in chronological order, from most recent to oldest.
- When the log is full, the oldest event is replaced by the logging of any new event.

-
1. + [#] + **6** + **0**
(Master Code)

Alpha Displays:

DISARMED READY TO ARM

2. The system displays the most recent event as follows:
- event number
 - type of event, identified by its corresponding code (see your installer for the meaning of each code)
 - zone or user number (depending on type of event)
 - time and date of the event's occurrence.
3. Pressing [*] displays previous events (back in time).
Pressing [#] displays events forward in time.
4. Exit the event log by pressing any key other than [*] or [#].

001 E441 U001 P1 12:34AM 01/02/00

The following table lists the codes that may appear when viewing the Event Log. If the event code is preceded by an “E” (as in the example display on the previous page), it means that the event is new and ongoing; if preceded by an “R,” it means the event has been restored.

Code	Definition
110	Fire Alarm
121	Duress
122	Alarm, 24-hour Silent
123	Alarm, 24-hour Audible
131	Alarm, Perimeter
132	Alarm, Interior
134	Alarm, Entry/Exit
135	Alarm, Day/Night
143	Alarm, Expansion Module
145	ECP Module cover tamper
146	Silent Burglary
150	Alarm, 24-Hour Auxiliary/Monitor zone
162	Carbon Monoxide
301	AC Power
302	Low System Battery/Battery Test Fail
305	System Reset (Log only)
309	Battery Test Failure
321	Bell/Siren Trouble
333	Trouble, Expansion Mod. Supervision
341	Trouble, ECP Cover Tamper
344	RF Receiver Jam
351	Telco Line Fault
353	Long Range Radio Trouble
373	Fire Loop Trouble
374	Exit Error Alarm
380	Global Trouble, Trouble Day/Night

Code	Definition
381	RF Supervision Trouble
382	Supervision Auxiliary Wire Zone
383	RF Sensor Tamper
384	RF Sensor Low-battery
393	Clean Me
401	Disarmed, Armed AWAY, Armed STAY
403	Schedule Arm/Disarm AWAY
406	Cancel by User
407	Remote Arm/Disarm (Downloading)
408	Quick Arm AWAY
409	Keyswitch Arm/Disarm AWAY
441	Disarmed/Armed STAY/INSTANT, Quick-Arm STAY/INSTANT
442	Keyswitch Arm/Disarm STAY
459	Recent Closing (restore only)
570	Bypass
601	Manually Triggered Dialer Test
602	Periodic Test
606	AAV to Follow
607	Walk Test Entered/Exited
623	Event Log 80% Full
625	Real-Time Clock was Changed (log only)
627	Program Mode Entry (log only)
628	Program Mode Exit (log only)
750 - 789	Reserved for Configurable Zone Type report codes (check with central station when using these codes)

Using Test mode allows each protection point to be checked for proper operation.

- The keypad sounds a single beep every 40 seconds as a reminder that the system is in the Test mode.
- Alarm messages are not sent to your Central Station while Test mode is on.

1. Disarm the system and close all protected windows, doors, etc. The READY indicator light should come on if all zones are intact (i.e., all protected windows, doors, etc. are closed).

Alpha Displays:

DISARMED READY TO ARM

2. + **5** then [0] (walk)

(Security Code) **TEST**

The Dial test (option "1") is intended for the installer and should not be used unless directed to do so by your Security System Representative.

1 = DIAL 0 = WALK

3. Listen. The external sounder should sound for 1 second and then turn off. If the sounder does not

TEST IN PROGRESS

**"Check" and
"Battery" Displays**

* Not all systems
use wireless
sensors.

Other Trouble Displays

* Any "beeping" that accompanies a trouble display can be stopped by depressing any key on the keypad or by entering an OFF sequence (code + OFF)

** Not all systems use wireless sensors.

Words or letters in parentheses () are those that are displayed on Alpha Display keypads.

COMM. FAILURE
(or **FC**) Indicates that a failure has occurred in the telephone communication portion of your system.
CALL FOR SERVICE.

SYSTEM LO BAT
(or **BAT** with no zone No.) Indicates that a low system battery condition exists. Display is accompanied by "beeping"* at the keypad. If this condition persists for more than one day (with AC present), **CALL FOR SERVICE.**

LO BAT
+ zone descriptor
(or **BAT** with zone No.) Indicates that there is a low battery condition in the wireless transmitter** number displayed (00 is RF keypad). Accompanied by a single "beep"* (about once every 40 seconds) at the keypad. Either replace the battery yourself, or **CALL FOR SERVICE.** If the battery is not replaced within 30 days, a **CHECK** display may occur.

Rcvr Jam
(or **CHECK 90**) Wireless part of the system is experiencing RF interference which may impede reception from wireless sensors.**

ALARM 1xx
FAULT 1xx
CHECK 1xx
(or **91**) Indicates a communication problem between the control and a connected device (e.g., RF receiver, zone expander) where the "xx" indicates the device address. **CALL FOR SERVICE.**

MODEM COMM
(or **CC**) Indicates that the control is on-line with the Central Monitoring Station's remote computer.
The control will not operate while on-line. Wait a few minutes — the display should disappear.

BELL FAILURE
(or **CHECK 70**) Indicates that the wiring connection to the external sounder is at fault (open or shorted). Accompanied by "beeping" at the keypad. **CALL FOR SERVICE.**

**Other Trouble
Displays
(Continued)**

**AC LOSS
(or NO AC)**

The system is operating on battery power only due to an AC power failure. If only some lights are out on the premises, check circuit breakers and fuses and reset or replace as necessary. If AC power cannot be restored and a “low system battery” message appears (see previous page), **CALL FOR SERVICE.**

**Busy-Standby
(or dI)**

If this message remains displayed for more than 1 minute, system is disabled. **CALL FOR SERVICE.**

**OPEN CIRCUIT
(or OC)**

The keypad is not receiving signals from the control. **CALL FOR SERVICE.**

**Long Rng Trbl
(or bF)**

If part of your system, back-up Long Range Radio communication has failed. **CALL FOR SERVICE.**

Total Power Failure **If there is no keypad display at all, and the READY indicator is not lit,** operating power (from AC and back-up battery) for the system has stopped and the system is inoperative. **CALL FOR SERVICE.**

In The Event Of Telephone Operational Problems

In the event of telephone operational problems, disconnect the control from the phone line by removing the plug from the phone wall jack. We recommend that your installer demonstrate this disconnection on installation of the system. Do not attempt to disconnect the phone connection inside the control. Doing so will result in the loss of your phone lines. If the regular phones work correctly after the control has been disconnected from the phone wall jack, the control has a problem and you should immediately call for service. If upon disconnection of the control, there is still a problem on the phone line, notify the Telephone Company that they have a problem and request prompt phone repair service. The user may not under any circumstances attempt any service or repairs to the security system. Repairs must be made only by authorized service (see the LIMITED WARRANTY statement for information on how to obtain service).

Taking Care of Your System

The components of your security system are designed to be as maintenance-free as possible. However, to make sure that your system is in reliable working condition, do the following:

1. Test your system weekly.
2. Test your system after any alarm occurs.

Silencing Low Battery Warning Tones at the Keypad

You can silence the keypad's warning tones by pressing the OFF key, but the keypad's low battery message display will remain on as a reminder that you have a low battery condition in one or more of your wireless sensors. When you replace the weak battery with a fresh one, the sensor sends a "good battery" signal to the control as soon as the sensor is activated (opening/closing of door, window, etc.), causing the low battery display to turn off. If the sensor is not activated, the display will automatically clear within approximately 1 hour.

Replacing Batteries in Wireless Sensors

Wireless sensors may not have been used in your security system

IMPORTANT:
Use only batteries recommended by your installer as replacement.

Each wireless sensor in your system has a 9-volt or 3-volt battery. The system detects a low battery in wireless sensors, including smoke detectors, the personal emergency transmitter, and the portable wireless keypad and displays a low battery message*. (A 9-volt battery in a portable wireless keypad is detected as soon as one of its keys is pressed, and displayed as **00**.) Battery-operated smoke detectors with a low battery also emit a single "chirp" sound approximately once every 20–30 seconds.

Alkaline batteries provide a minimum of 1 year of operation, and in most units and applications, provide 2–4 years of service. 3-volt lithium batteries provide up to 4 or more years of operation. Actual battery life will depend on the environment in which the sensor is used, the number of signals that the transmitter in the sensor has had to send, and the specific type of sensor. Factors such as humidity, high or low temperatures or large swings in temperature, may all lead to the reduction of actual battery life in an installation.

* The low battery message comes on as a warning that battery replacement in indicated sensor(s) is due within 30 days. In the meantime, a sensor causing a low battery indication is still operational.

Routine Care

- Treat the components of your security system as you would any other electrical equipment. Do not slam sensor-protected doors or windows.
- Keep dust from accumulating on the keypad and all protective sensors, particularly on motion sensors and smoke detectors.
- The keypad and sensors should be cleaned carefully with a dry soft cloth. **Do not spray water or any other fluid on the units.**

THIS SECTION APPLIES ONLY TO RESIDENTIAL SYSTEMS

General Your fire alarm system (if installed) is on 24 hours a day, for

THIS SECTION APPLIES ONLY TO RESIDENTIAL SYSTEMS

**Manually
Initiating
a Fire Alarm**

1. Should you become aware of a fire emergency before your smoke or heat detectors sense the problem, go to your nearest keypad and manually initiate an alarm by pressing the panic key assigned for FIRE emergency for 2 seconds. If a key pair has been assigned for fire, press both keys at the same time. See the *Using the Panic Keys* section below for further details.
2. Evacuate all occupants from the premises.
3. If flames and/or smoke are present, leave the premises and notify your local Fire Department immediately.
4. If no flames or smoke are apparent, investigate the cause of the alarm. The zone number(s) of the zone(s) in an alarm condition will be displayed at the keypad.

**Using the Panic
Key(s) Assigned
for FIRE
Emergency**

A key or key pair may have been assigned for manually initiating a FIRE alarm. See the *Panic Keys* section for key assignments.

For convenience, indicate the key or key pair assigned for fire below.

Individual Keys

A B C

 Press the individual key assigned for fire for 2 seconds.

OR

Key Pairs

 1 OFF and *** READY**

 *** READY** and **#**

 3 STAY and **#**

Press the key pair assigned for fire at the same time.

DISPLAYS FOLLOWING MANUAL INITIATION OF A FIRE ALARM

FIRE 95

ALPHA DISPLAY KEYPAD

95
AC

**ALARM
FIRE**

FIXED-WORD KEYPAD

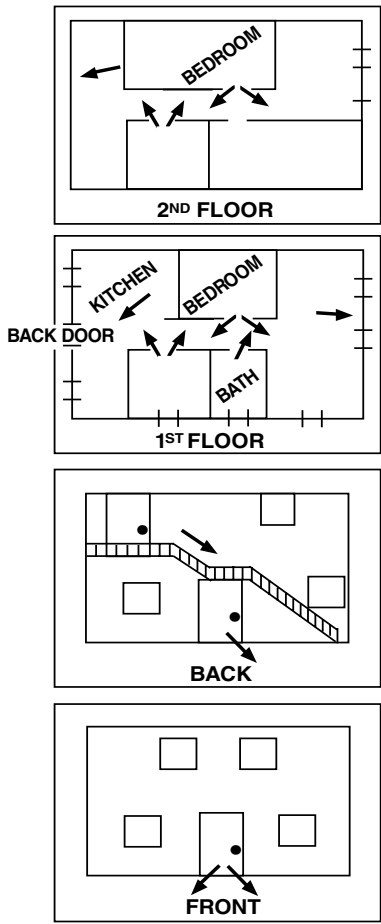
THIS SECTION APPLIES ONLY TO RESIDENTIAL SYSTEMS

With regard to the number and placement of smoke/heat detectors, we subscribe to the recommendations contained in the National Fire Protection Association's National Fire Alarm Code (NFPA 72) noted below.

Early warning fire detection is best achieved by the installation of fire detection equipment in all rooms and areas of the household as follows: A smoke detector installed outside of each separate sleeping area, in the immediate vicinity of the bedrooms and on each additional story of the family living unit, including basements and excluding crawl spaces and unfinished attics.

In addition, the NFPA recommends that you install heat or smoke detectors in the living room, dining room, bedroom(s), kitchen, hallway(s), attic, furnace room, utility and storage rooms, basements and attached garages.

THIS SECTION APPLIES ONLY TO RESIDENTIAL SYSTEMS



FUNCTION	PROCEDURE	COMMENTS
Check Zones	Press READY key.	View faulted zones when system not ready.

Fixed-Word Display Keypads

SOUND	CAUSE	DISPLAY
LOUD, INTERRUPTED* Keypad & Ext.	FIRE ALARM	FIRE is displayed; zone number of zone in alarm is displayed. If a fire alarm is manually activated, zone number 95 will be displayed.
LOUD, CONTINUOUS* Keypad & Ext.	BURGLARY/AUDIBLE EMERGENCY ALARM	ALARM is displayed. Zone number of zone in alarm is also displayed.
ONE SHORT BEEP (not repeated) Keypad only	a. SYSTEM DISARM	

Alpha Display Keypads

SOUND	CAUSE	DISPLAY
LOUD, INTERRUPTED* Keypad & Ext.	FIRE ALARM.	FIRE is displayed; descriptor of zone in alarm is displayed. If a fire alarm is manually activated, zone number 95 will be displayed.
LOUD, CONTINUOUS* Keypad & Ext.	BURGLARY/AUDIBLE EMERGENCY ALARM.	ALARM is displayed. If programmed, descriptor of zone in alarm is also displayed
ONE SHORT BEEP (not repeated) Keypad only	a. SYSTEM DISARM. b. SYSTEM ARMING ATTEMPT WITH AN OPEN ZONE. c. BYPASS VERIFY.	a. DISARMED/READY TO ARM is displayed. b. Number and descriptor of open protection zone is displayed. c. Numbers and descriptors of the bypassed zones are displayed (One beep is heard for each zone displayed). Subsequently, the following is displayed: DISARMED BYPASS /Ready to Arm.
ONE SHORT BEEP (once every 40 secs) Keypad only	a. SYSTEM IS IN TEST MODE. b. LOW BATTERY AT A TRANSMITTER. c. SYSTEM WILL AUTOARM WITHIN 10 MINUTES	a. Opened Zone identifications will appear. b. LO BAT displayed with description of transmitter. c. No special display.
TWO SHORT BEEPS Keypad only	ARM AWAY or MAXIMUM.	ARMED AWAY or MAXIMUM displayed. Red ARMED indicator lit.
THREE SHORT BEEPS Keypad only	a. ARM STAY, NIGHT-STAY, OR INSTANT. b. ZONE OPENED WHILE SYSTEM IS DISARMED.	a. ARMED STAY or ARMED INSTANT displayed. Red ARMED indicator lit. b. CHIME displayed, descriptor of open protection zone will be displayed if the [] key is pressed.
RAPID BEEPING Keypad only	a. TROUBLE. b. MEMORY OF ALARM. c. SYSTEM LOW BATTERY. d. EXT. SOUNDER WIRE FAIL.	a. CHECK displayed. Descriptor of troubled protection zone is displayed. b. FIRE or ALARM is displayed; descriptor of zone in alarm is displayed. c. SYSTEM LO BAT displayed. d. BELL FAILURE is displayed.
SLOW BEEPING Keypad only	a. EXIT DELAY WARNING (if programmed). b. ENTRY DELAY WARNING.	a. ARMED AWAY OR MAXIMUM is displayed along with You May Exit Now. b. DISARM SYSTEM OR ALARM WILL OCCUR is displayed. Exceeding the delay time without disarming causes an alarm.

* If a bell is used as external sounder, fire alarm is *pulsed ring*; burglary/audible emergency is *steady ring*.

NOTE: This is a “Grade A” Residential System

RADIO FREQUENCY EMISSIONS

Federal Communications Commission (FCC) Part 15

This device complies with part 15 of the FCC rules. Operation is subject to the following two conditions: (1) This device may not cause harmful interference, and (2) this device must accept any interference received, including interference that may cause undesired operation.

Industry Canada

This Class B digital apparatus complies with Canadian ICES-003.
Cet Appareil numérique de la classe B est conforme à la norme NMB-003 du Canada.

TELEPHONE/MODEM INTERFACE

FCC Part 68

This equipment complies with Part 68 of the FCC rules. On the front cover of this equipment is a label that contains the FCC registration number and Ringer Equivalence Number (REN). You must provide this information to the telephone company when requested.

This equipment uses the following USOC jack: RJ31X

This equipment may not be used on telephone-company-provided coin service. Connection to party lines is subject to state tariffs. This equipment is hearing-aid compatible.

Industry Canada

NOTICE: The Industry Canada Label identifies certified equipment. This certification means that the equipment meets telecommunications network protective, operational and safety requirements as prescribed in the appropriate Terminal Equipment Technical Requirements document(s). The Department does not guarantee the equipment will operate to the user's satisfaction.

Before installing this equipment, users should ensure that it is permissible to be connected to the facilities of the local telecommunications company. The equipment must also be installed using an acceptable method of connection. The customer should be aware that compliance with the above conditions may not prevent degradation of service in some situations.

Repairs to certified equipment should be coordinated by a representative designated by the supplier. Any repairs or alterations made by the user to this equipment, or equipment malfunctions, may give the telecommunications company to request the user to disconnect the equipment.

Users should ensure for their own protection that the electrical ground connections of the power utility, telephone lines and internal metallic water pipe system, if present, are connected together. This precaution may be particularly important in rural areas.

CAUTION: Users should not attempt to make such connections themselves but should contact appropriate electric inspection authority, or electrician, as appropriate.

Ringer Equivalence Number Notice:

The **Ringer Equivalence Number** (REN) assigned to each terminal device provides an indication of the maximum number of terminals allowed to be connected to a telephone interface. The termination on an interface may consist of any combination of devices subject only to the requirement that the sum of the Ringer Equivalence Numbers of all the devices does not exceed 5.

Industrie Canada

AVIS: l'étiquette d'Industrie Canada identifie le matériel homologué. Cette étiquette certifie que le matériel est conforme aux normes de protection, d'exploitation et de sécurité des réseaux de télécommunications, comme le prescrivent les documents concernant les exigences techniques relatives au matériel terminal. Le Ministère n'assure toutefois pas que le matériel fonctionnera à la satisfaction de l'utilisateur.

Avant d'installer ce matériel, l'utilisateur doit s'assurer qu'il est permis de le raccorder aux installations de l'entreprise locale de télécommunication. Le matériel doit également être installé en suivant une méthode acceptée de raccordement. L'abonné ne doit pas oublier qu'il est possible que la conformité aux conditions énoncées ci-dessus n'empêche pas la dégradation du service dans certaines situations.

Les réparations de matériel homologué doivent être coordonnées par un représentant désigné par le fournisseur. L'entreprise de télécommunications peut demander à l'utilisateur de débrancher un appareil à la suite de réparations ou de modifications effectuées par l'utilisateur ou à cause de mauvais fonctionnement.

Pour sa propre protection, l'utilisateur doit s'assurer que tous les fils de mise à la terre de la source d'énergie électrique, de lignes téléphoniques et des canalisations d'eau métalliques, s'il y en a, sont raccordés ensemble. Cette précaution est particulièrement importante dans les régions rurales.

Avertissement : L'utilisateur ne doit pas tenter de faire ces raccordements lui-même; il doit avoir recours à un service d'inspection des installations électriques, ou à un électricien, selon le cas.

AVIS : L'indice d'équivalence de la sonnerie (IES) assigné à chaque dispositif terminal indique le nombre maximal de terminaux qui peuvent être raccordés à une interface. La terminaison d'une interface téléphonique peut consister en une combinaison de quelques dispositifs, à la seule condition que la somme d'indices d'équivalence de la sonnerie de tous les dispositifs n'excède pas 5.

SERVICING INFORMATION

Your local authorized service representative is the person best qualified to service your

User Setup

The following chart will help keep track of system users. To program a user attribute:
Enter system master code + [8] + user no. + “#” command listed in column heading...

User No.	User Name	Security Code enter new code	Auth. Level [#] [1] + level	Access Group [#] [2] + group	RF Zone Number [#] [4] + zone no.	Pager on/off [#] [5] + 0/1
01	installer		installer			(1)
02	system master		master			(1)
03			(0)			(1)
04			(0)			(1)
05			(0)			(1)
06			(0)			(1)
07			(0)			(1)
08			(0)			(1)
09			(0)			(1)
10			(0)			(1)
11			(0)			(1)
12			(0)			(1)
13			(0)			(1)
14			(0)			(1)
15			(0)			(1)
16			(0)			(1)

Authority Levels: 0 = standard user
1 = arm only
2 = guest
3 = duress

Paging: 0 = no paging
1 = allow paging

Paging Setup

	Pager Phone Number\ Prefix Characters	Automatically Reports Upon...				Sched.	Func. Key
		open/close	alarm/trouble	zone list			
Pager							

Schedules: master code + [#] + [6] [4].

No.	Event (see list below)	Device No. for "01" events: (see device list below)	Group No. for "02" events: enter 1-8	Start Time/ Day	Stop Time/ Day	Repeat (0-4)	Random (yes/no)
01							

Events: 00 = clear event 03 = latch key report 06 = auto disarm
01 = device on/off 04 = forced STAY arm 07 = display "reminder"
02 = user access 05 = forced AWAY arm

Repeat Options: 0 = none; 1 = repeat weekly; 2 = repeat every other week; 3 = repeat every third week; 4 = repeat every fourth week

List of Output Devices

Device	Description	Schedule No.	Function Key
01			
02			
03			
04			

OWNER'S INSURANCE PREMIUM CREDIT REQUEST

This form should be completed and forwarded to your homeowner's insurance carrier for possible premium credit.

A. GENERAL INFORMATION:

Insured's Name and Address: _____

Insurance Company: _____ Policy No.: _____

ADEMCO VISTA-10P/VISTA-10PSIA _____ Other

Type of Alarm: Burglary Fire Both

Installed by: _____ Serviced by: _____
Name Name
Address Address

B. NOTIFIES (Insert B = Burglary, F = Fire)

Local Sounding Device _____ Police Dept. _____ Fire Dept. _____

Central Station Name: _____
Address: _____
Phone: _____

C. POWERED BY: A.C. With Rechargeable Power Supply

D. TESTING: Quarterly Monthly Weekly Other _____

continued on other side

OWNER'S INSURANCE PREMIUM CREDIT REQUEST
(cont.)

E. SMOKE DETECTOR LOCATIONS

- | | | | |
|---------------------------------------|--------------------------------------|--------------------------------------|--------------------------------|
| <input type="checkbox"/> Furnace Room | <input type="checkbox"/> Kitchen | <input type="checkbox"/> Bedrooms | <input type="checkbox"/> Attic |
| <input type="checkbox"/> Basement | <input type="checkbox"/> Living Room | <input type="checkbox"/> Dining Room | <input type="checkbox"/> Hall |

F. BURGLARY DETECTING DEVICE LOCATIONS:

- | | | | |
|--|--|------------------------------------|---|
| <input type="checkbox"/> Front Door | <input type="checkbox"/> Basement Door | <input type="checkbox"/> Rear Door | <input type="checkbox"/> All Exterior Doors |
| <input type="checkbox"/> 1 st Floor Windows | <input type="checkbox"/> All windows | | |

0 13.92 10.56 reSBT/T1_2 1 Tff0 Tc 8.03999 0 0 89 323.07968 557

WARNING! THE LIMITATIONS OF THIS ALARM SYSTEM

While this system is an advanced design security system, it does not offer guaranteed protection against burglary or other

ONE YEAR LIMITED WARRANTY

Honeywell International Inc., acting through its Security & Custom Electronics business ("Seller"), 165 Eileen Way, Syosset, New York 11791, warrants its security equipment (the "product") to be free from defects in materials and workmanship for one year from date of original purchase, under normal use and service. Seller's obligation is limited to repairing or replacing, at its option, free of charge for parts, labor, or transportation, any product proven to be defective in materials or workmanship under normal use and service. Seller shall have no obligation under this warranty or otherwise if the product is altered or improperly repaired or serviced by anyone other than the Seller. In case of defect, contact the security professional who installed and maintains your security equipment or the Seller for product repair.

This one year Limited Warranty is in lieu of all other express warranties, obligations or liabilities. THERE ARE NO EXPRESS WARRANTIES, WHICH EXTEND BEYOND THE FACE HEREOF. ANY IMPLIED WARRANTIES, OBLIGATIONS OR LIABILITIES MADE BY SELLER IN CONNECTION WITH THIS PRODUCT, INCLUDING ANY IMPLIED WARRANTY OF MERCHANTABILITY, OR FITNESS FOR A PARTICULAR PURPOSE OR OTHERWISE, ARE LIMITED IN DURATION TO A PERIOD OF ONE YEAR FROM THE DATE OF ORIGINAL PURCHASE. ANY ACTION FOR BREACH OF ANY WARRANTY, INCLUDING BUT NOT LIMITED TO ANY IMPLIED WARRANTY OF MERCHANTABILITY, MUST BE BROUGHT WITHIN 12 MONTHS FROM DATE OF ORIGINAL PURCHASE. IN NO CASE SHALL SELLER BE LIABLE TO ANYONE FOR ANY CONSEQUENTIAL OR INCIDENTAL DAMAGES FOR BREACH OF THIS OR ANY OTHER WARRANTY, EXPRESS OR IMPLIED, OR UPON ANY OTHER BASIS OF LIABILITY WHATSOEVER, EVEN IF THE LOSS OR DAMAGE IS CAUSED BY THE SELLER'S OWN NEGLIGENCE OR FAULT. Some states do not allow limitation on how long an implied warranty lasts or the exclusion or limitation of incidental or consequential damages, so the above limitation or exclusion may not apply to you.

Seller does not represent that the product may not be compromised or circumvented; that the product will prevent any personal injury or property loss by burglary, robbery, fire or otherwise; or that the product will in all cases pro-